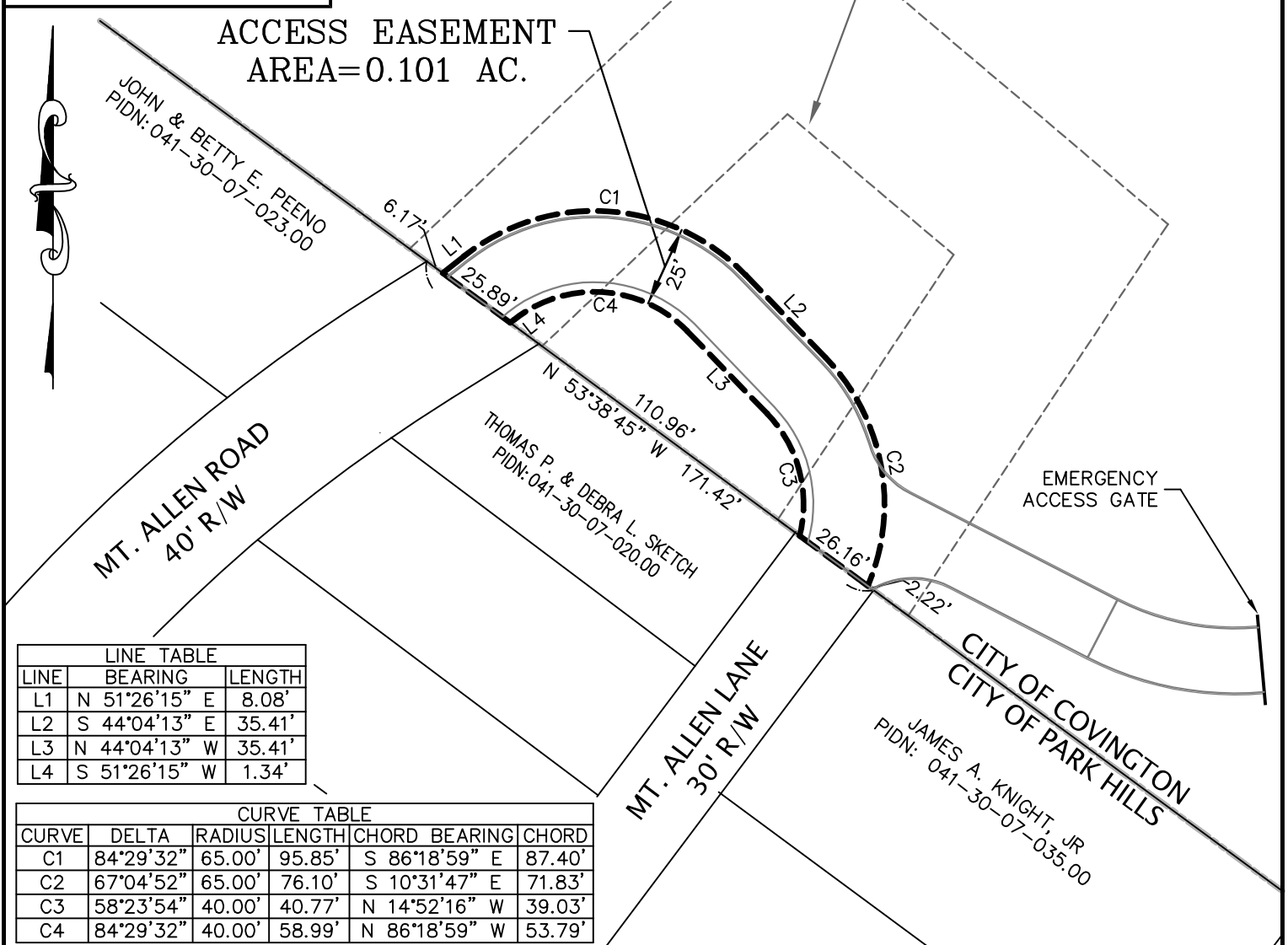
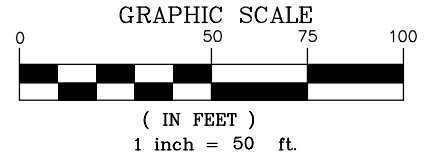




**VICINITY MAP**  
SCALE: 1" = 2000'

COMMONWEALTH OF KY  
BOARD OF REGENTS  
NORTHERN KY STATE COLLEGE  
PIDN: 041-30-00-022.00  
D.B. C6188 PG 191



LINE TABLE		
LINE	BEARING	LENGTH
L1	N 51°26'15" E	8.08'
L2	S 44°04'13" E	35.41'
L3	N 44°04'13" W	35.41'
L4	S 51°26'15" W	1.34'

CURVE TABLE						
CURVE	DELTA	RADIUS	LENGTH	CHORD	BEARING	CHORD
C1	84°29'32"	65.00'	95.85'	S 86°18'59" E	87.40'	
C2	67°04'52"	65.00'	76.10'	S 10°31'47" E	71.83'	
C3	58°23'54"	40.00'	40.77'	N 14°52'16" W	39.03'	
C4	84°29'32"	40.00'	58.99'	N 86°18'59" W	53.79'	

**CARDINAL**  
**ENGINEERING**  
**LAND SURVEYING**

**ACCESS EASEMENT**  
for  
**ARLINGTON PROPERTIES**  
**2 NORTH 20TH STREET, SUITE 700**  
**BIRMINGHAM, ALABAMA 35203**

ONEMOOCK ROAD  
WILDER, KENTUCKY  
41071 (859) 581-9600

PROJECT MANAGER:	JGK
DRAWN BY:	JKT
DATE:	09-09-2020
SCALE:	1" = 50'
FILE NO.	19-071