



CITY OF PARK HILLS

1106 Amsterdam Road
Park Hills, Kentucky 41011
(859) 431-6252
www.parkhillsky.net

Meeting Minutes

Park Hills Infrastructure Committee Meeting
Park Hills, Kentucky
4/26/2018

PRESENT:	Karl Oberjohn	Councilmember, Committee Co-Chair
	Greg Claypole	Councilmember, Committee Co-Chair (departed 6:00)
	James Jenkins	Committee Member
	Dan VonHandorf	Public Works Director (arrived 5:15)
	Matt Mattone	Mayor
	Jay Bayer	City Engineer, Bayer Becker
	Zach Borchers	Engineer, Bayer Becker
	Kyle Snyder	Planning & Development Services (departed 6:00)
	Karen Oberjohn	Resident
ABSENT:	Kathy Zembrodt	Councilmember, Committee Member

This meeting was held at the Bayer Becker Kentucky office on 4/26/2018 from 4:30-7:30 PM. The following are notes from the meeting.

PDS Sidewalk and Sign Assessment, GIS Services

1. Mr. Kyle Snyder, Principal GIS Specialist with PDS, gave a presentation (attached) about the sidewalk and sign assessment performed by PDS for the city at the beginning of 2018. He also discussed some of the GIS services that are available to the city through PDS.
2. Assessment highlights
 - a. Data collected by Donnie Edwards (PDS) using collector hardware and software manufactured by ESRI with a resolution of 1-2 feet. Database support provided by Christy Powell, Senior GIS Programmer/Specialist at PDS.
 - b. Some Kenton County sidewalk data is already available from a 2013 study; newly-acquired Park Hills data has been added to this database. Covington has had a similar sidewalk assessment.
 - c. Sidewalks: 6.25 miles of public sidewalks digitized as 819 data points describing 507 segments. .37 miles (1955 ft), about 6%, has failed. J. Bayer asked for clarification on the criteria used for trip hazards; K. Snyder will investigate.
 - d. Curb ramps: 72 points total; 10 points "poor" or "very poor" (14%)
 - e. Walk signals: 18 signals on Dixie, 4 in "fair" condition
 - f. Poles (sign posts): 283 poles; 213 galvanized (new breakaway design), 56 metal (mostly light posts), 14 wood
 - g. Signs: 422 signs; 50 "poor" or "very poor" (12%). Presence of reflective coating (new standard) was recorded for each sign.
 - h. Some other features were recorded, such as the Jackson Road hairpin curve mirror, Dixie Hwy lamp posts and trash cans, flagpole in front of city building
3. Processing the assessment data
 - a. Cloud-based (ArcGIS Collector) and desktop-based (ArcGIS ArcMap 10.4) software applications can be used to access the data with various read/write permissions.



CITY OF PARK HILLS

1106 Amsterdam Road
Park Hills, Kentucky 41011
(859) 431-6252
www.parkhillsky.net

- b. Software with authoring features will consume license credits; viewing software will not.
 - c. Some restricted-access data is available, including water and sewer lines and fire hydrants.
 - d. "Storymaps" can be created to highlight areas with high concentrations of damage or areas where pedestrian facilities are limited or missing.
 - e. Once more data sets are added (pavement assessment, tree inventory, street lighting), can look at interactions between data sets (for example, sidewalk failures and trees).
4. Some other services available
- a. PaverSaver portal: Free service offered by PDS to allow cities and utility companies to upload their infrastructure project data to maximize the potential for projects to be synchronized
 - b. Drones: Have been used for fire control, honeysuckle mitigation, flood analysis

Park Pointe Development

1. J. Bayer indicated that the city has 90 days to formally approve or disapprove of CondoView LLC's Stage 1 Development Plan for the Park Pointe development, which was approved by the Kenton County Planning Commission on April 5. This puts the city's deadline at July 4. If no action is taken by this date, then the KCPC's recommendation shall become final and effective.
2. J. Bayer also recommended that Mayor Mattone verify that his comments at the April 5 KCPC meeting have been entered into the official record.
3. Mayor Mattone will arrange meeting with City Engineer and City Attorney to review city's concerns. Some concerns include:
 - a. Whether Old State Road will be extended to Dixie Highway
 - b. Patton Drive crossing Park Hills city property at intersection with Amsterdam Road
 - c. Retaining wall at the bottom of Patton Drive
 - d. Whether Amsterdam Road be improved/reconfigured, and who will pay for it
 - e. Beautification of Amsterdam Valley, including removal of many dead trees
 - f. Disposition of Gateway College sign
 - g. SD1's interests and plans for drainage basin
 - h. Whether any trails will be open to the public or only to homeowners association members
4. The status of the current end point of Old State Road was discussed.
 - a. D. VonHandorf prefers Old State Road to be one-way entering Park Pointe with provisions for two-way traffic for emergencies.
 - b. Committee favors having at least a pedestrian/bicycle connection to Park Pointe even if Old State Road is closed.
 - c. Karen O. suggested a landscaping screen at the end of Old State Road during construction.
5. J. Jenkins suggested that the city enter into a performance bond agreement with the developer to fund maintenance of new streets until houses are built.

Audubon Storm Sewer

1. Eaton Construction seeks \$2,025 to undercut and reinstall stone work surrounding storm sewer inlet, will restore eroded lawn at their own expense. Z. Borchers recommended accepting this proposal. Committee accepted.



CITY OF PARK HILLS

1106 Amsterdam Road
Park Hills, Kentucky 41011
(859) 431-6252
www.parkhillsky.net

North Arlington Road

1. D. VonHandorf indicated that residents at 811 Arlington Road desire a storm sewer inlet in their yard. An easement agreement is being worked on.
2. Gas main work will be done shortly.
3. Z. Borchers recommended that City Council hold a special meeting on May 3rd at 6:00 PM to approve a contractor, preceded by an Infrastructure Committee meeting at 5:45 PM to review the bids. This would save about a week and a half compared to waiting for the next Council meeting on May 14.

Jackson Road

1. Residents at 1029 Jackson Road have requested that the restored hillside grading related to the storm sewer work match the grading of their property.
2. Bayer Becker has requested an updated proposal from Geotechnology, Inc.

Studies

1. Pavement assessment has not yet begun due to Bayer Becker's workload involving current street projects and due diligence on Park Pointe development.
2. Preliminary evaluation of Lawton Road will be done during the pavement assessment.

If anything in these meeting notes does not coincide with your interpretation or recollection of the events, please contact the author at your earliest convenience.

Karl Oberjohn

cc: All Present
File



PDS

City of Park Hills

Asset Management Projects

April 26th, 2018

J. Kyle Snyder, GISP
jksnyder@pdskc.org



LINK-GIS

A Northern Kentucky Geographic Information System

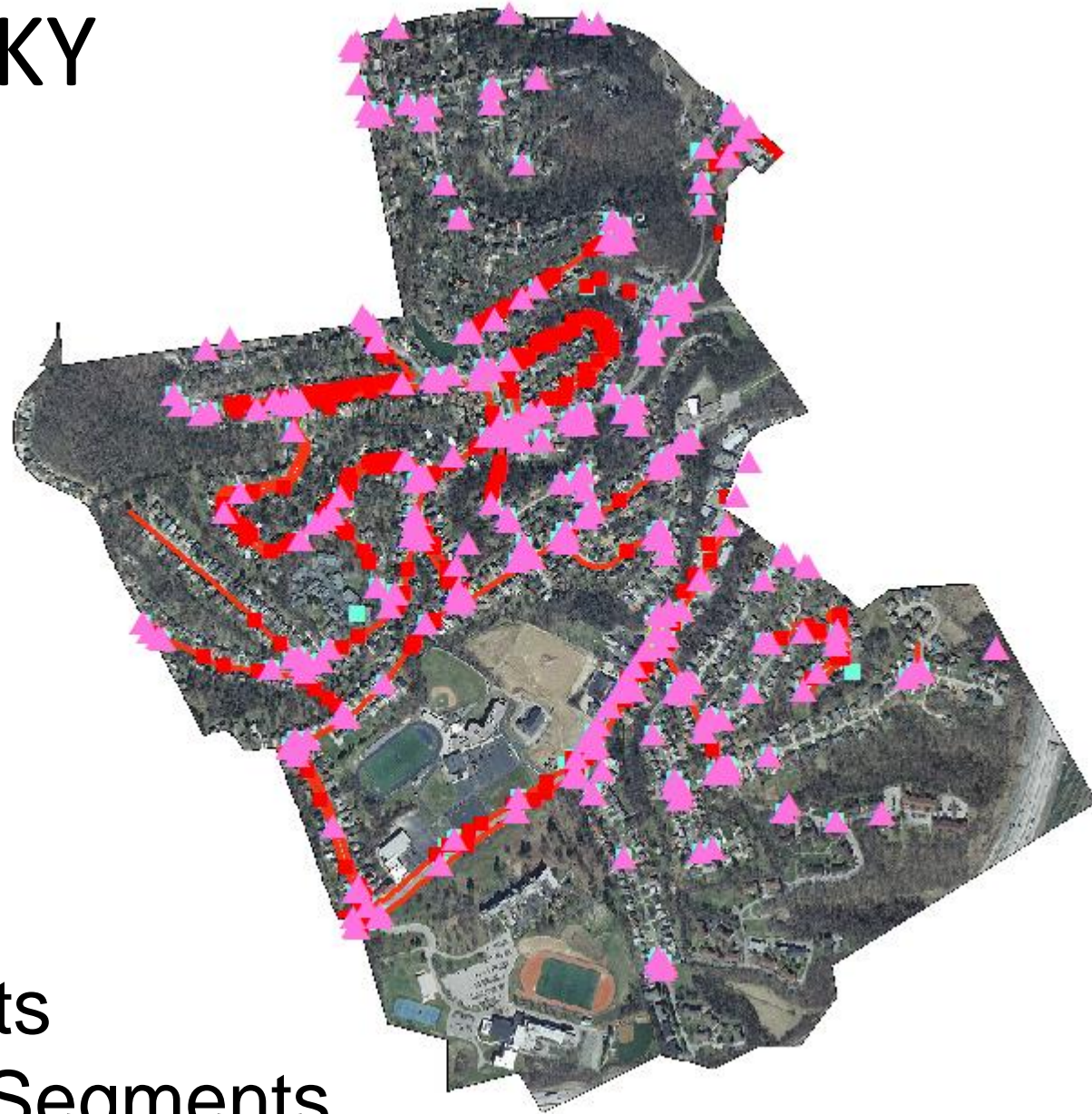
Asset Management Projects

- Overview
- Sidewalks
 - Sidewalk failures
 - GPS points
 - Linear features
 - Crosswalk ramps
 - Crossing signals
- Street signs
 - Poles
 - Sign inventory
- Other stuff (bonus)
- Next steps



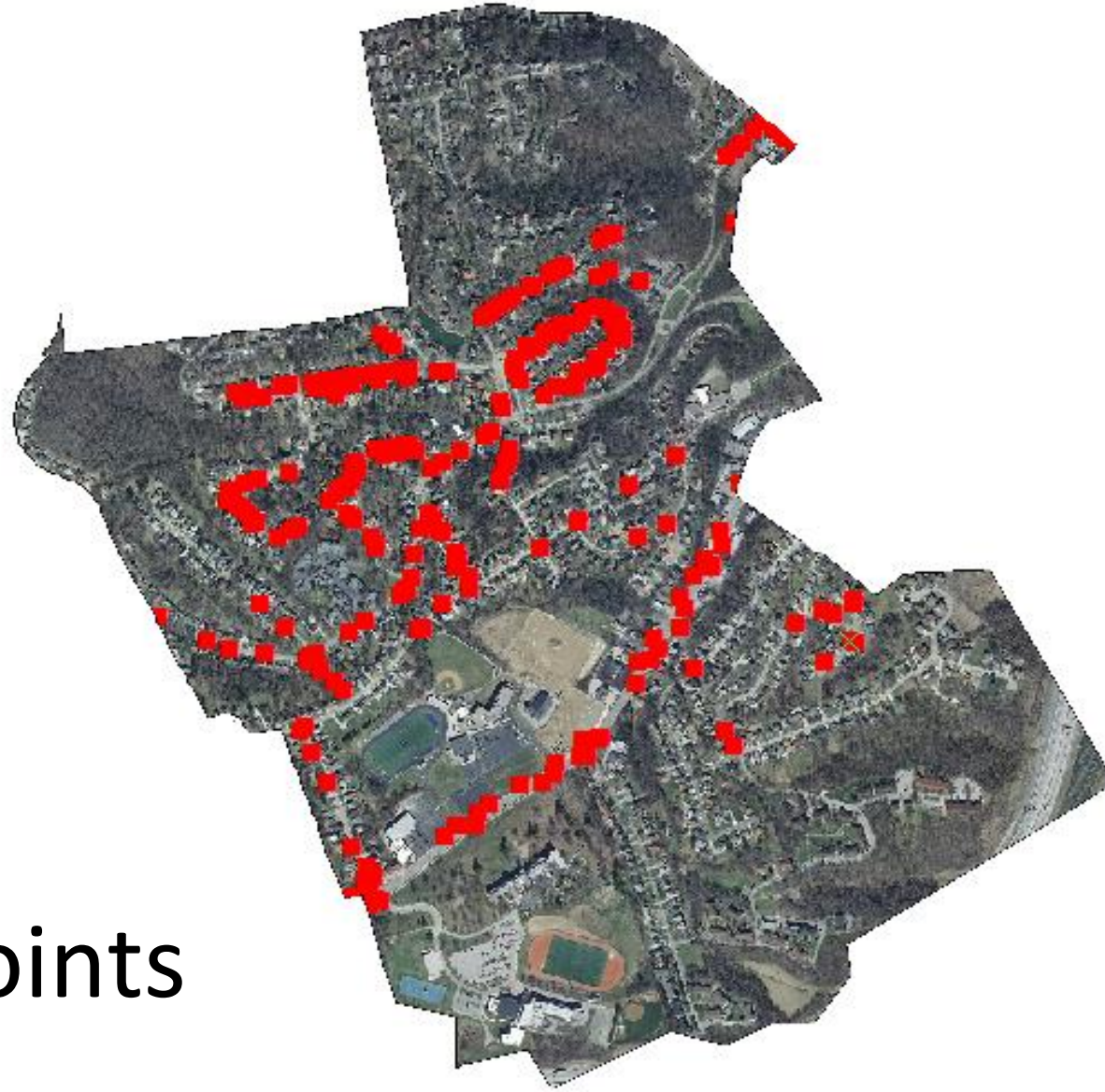


Park Hills, KY



819 Data Points
507 Sidewalk Segments

Sidewalk Failures



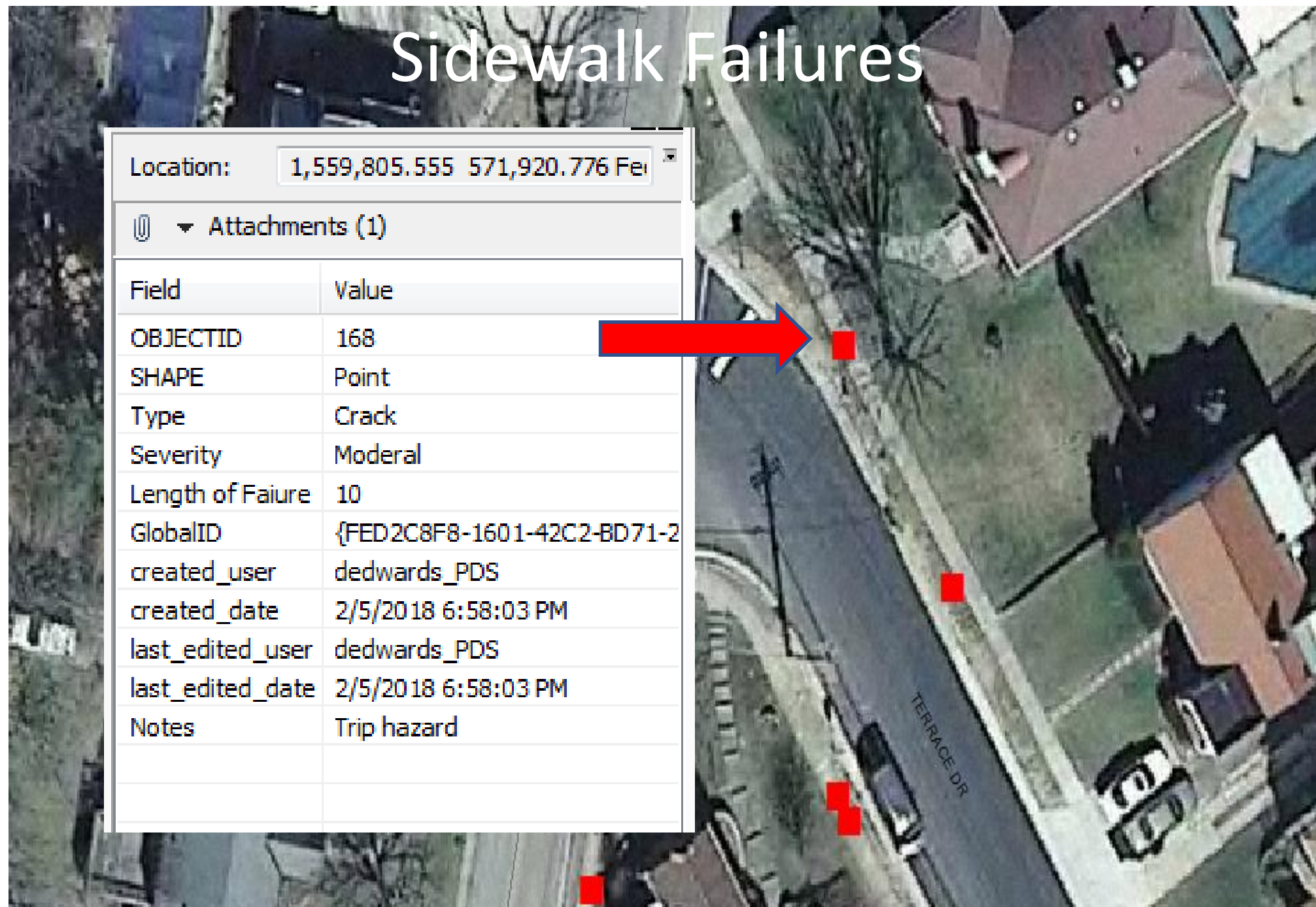
264 points

Sidewalk Failures

Location: 1,559,805.555 571,920.776 Feet

📎 Attachments (1)

Field	Value
OBJECTID	168
SHAPE	Point
Type	Crack
Severity	Moderal
Length of Faiure	10
GlobalID	{FED2C8F8-1601-42C2-BD71-2}
created_user	dedwards_PDS
created_date	2/5/2018 6:58:03 PM
last_edited_user	dedwards_PDS
last_edited_date	2/5/2018 6:58:03 PM
Notes	Trip hazard



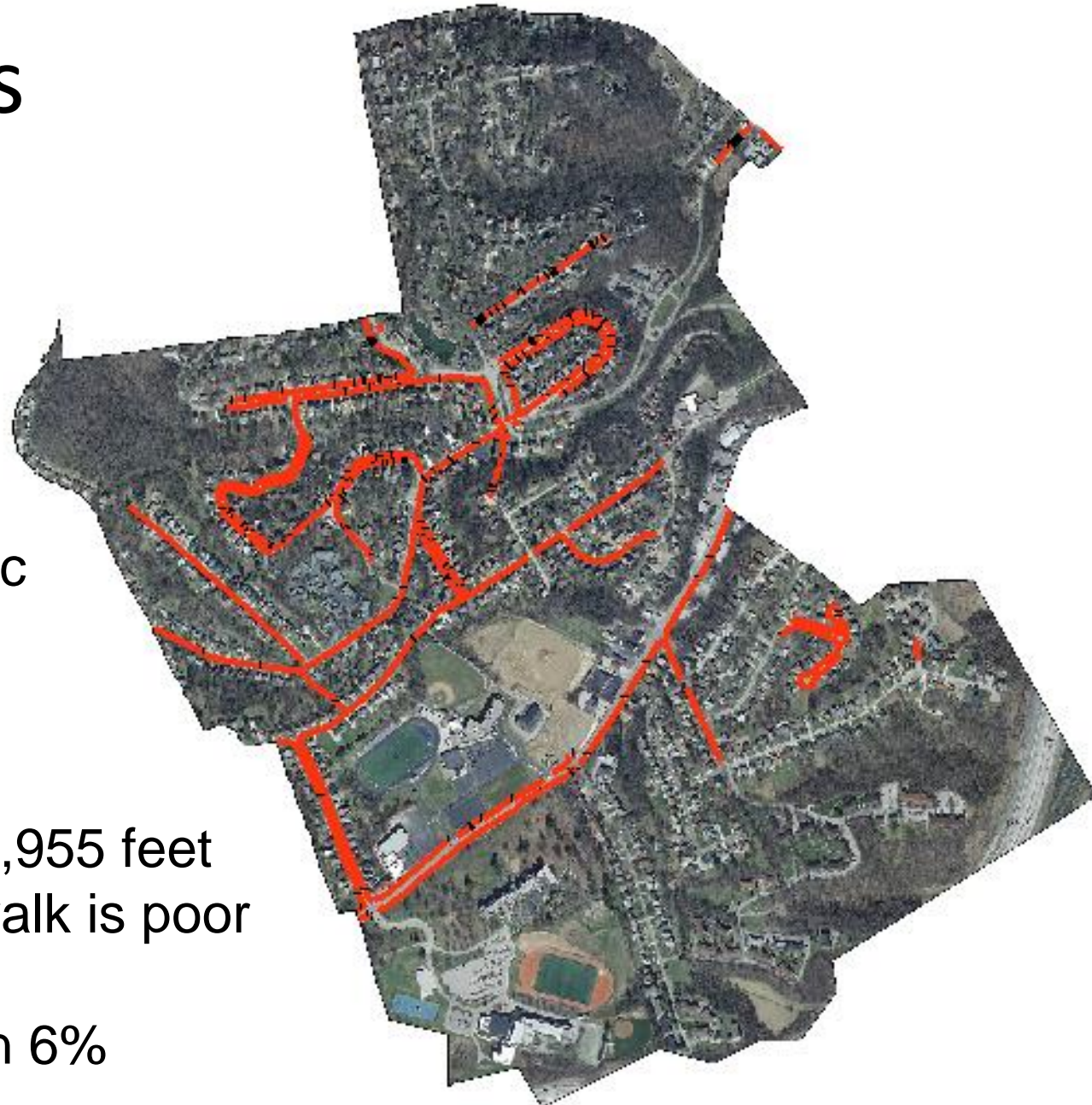


Sidewalks

6.25 mi of public
Sidewalk

.37 miles or 1,955 feet
of public Sidewalk is poor

Less than 6%



TERRACE DR

Location: 1,559,807.091 571,921.080 Feet

Field	Value
Comments	
CONDITION	POOR
Date_Digit	3/20/2013
Distance_from_Curb	4
Editor	RJZ
Location	
Material	CONCRETE
Mile	0.001861
Name	TERRACE DR
OBJECTID	41
Shape	Polyline
Shape_Le_1	9.827133
Shape_Leng	9.827133
Shape_Length	9.827133
Status	EXISTING
TARGET_FID	0
Type	SIDEWALK
Web	
Width	4



Curb Ramps


72 point's

10 points Poor or Very Poor

Less than 14%



Curb Ramps

Identify	
Identify from:	 Curb_Ramps
Location:	1,559,774.436 571,940.814 Feet
Attachments (1)	
Field	Value
OBJECTID	17
SHAPE	Point M
Facility Identifier	<null>
Ramp Type	Parallel
Detectable Warning	No
Width	<null>
Slope	<null>
Install Date	<null>
Condition	Poor
Owned By	1
Managed By	<null>
CreationDate	2/5/2018 7:02:12 PM
Creator	dedwards_PDS
EditDate	2/22/2018 7:30:20 PM
Editor	dedwards_PDS
GlobalID	{7D6AC771-EE69-4779-ACEF-58A7754FFF38}

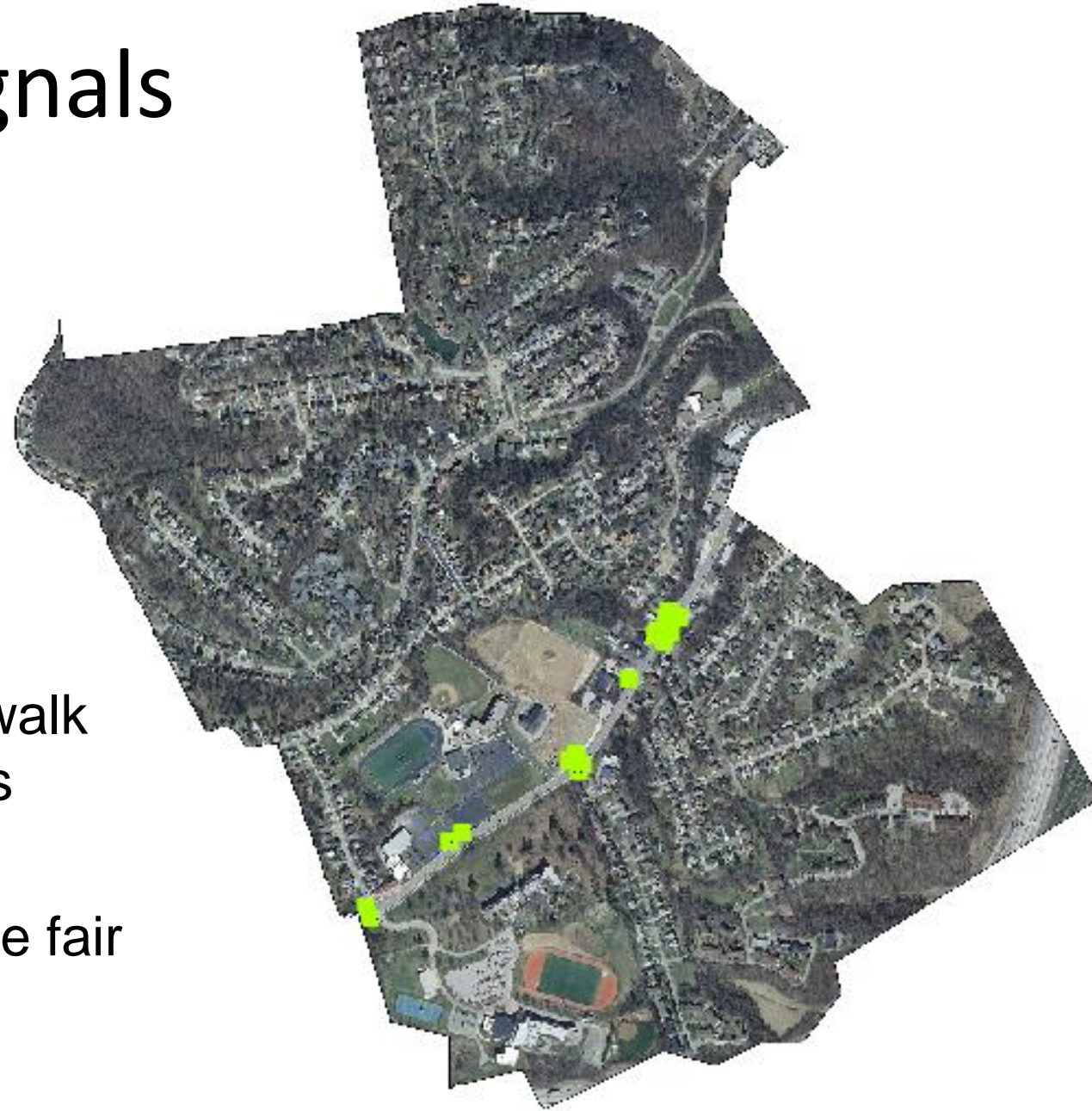




Walk Signals

18 Crosswalk
Signals

Only 4 were fair



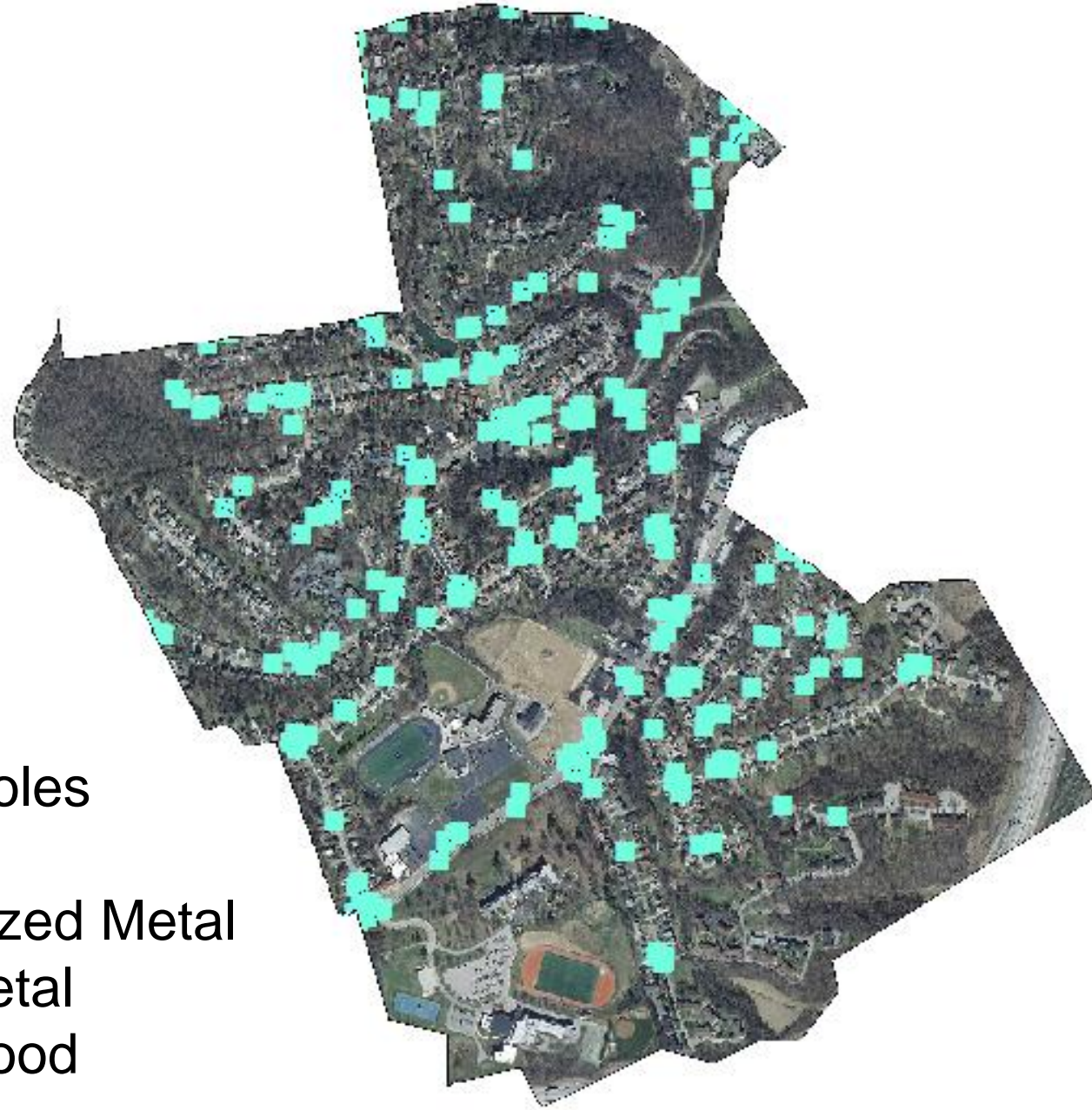
Walk Signals



Walk Signals



Poles




283 Poles

213 Galvanized Metal

56 Metal

14 Wood

Identify

Identify from:  Poles

Location: 1,559,789.920 571,931.098 Feet

Field	Value
Condition	Good
CreationDate	2/5/2018 7:00:52 PM
Creator	dedwards_PDS
EditDate	2/22/2018 7:30:40 PM
Editor	dedwards_PDS
Facility Identifier	<null>
GlobalID	{D20EC4E1-2C28-4B9B-BF8E-F6BD917F5E}
Height	<null>
Install Date	<null>
Intersection Identifier	<null>
Joint Use	Yes
Last Editor	<null>
Last Update Date	<null>
Location	<null>
Managed By	<null>
Mast Arm Type	<null>
Material	Galvanized Metal
OBJECTID	89
Owned By	1
Primary Use	<null>
SHAPE	Point
Shape	<null>



Sign



422 Signs

50 Poor or Very Poor
Less than 12%

Sign

Location: 1,559,784.151 571,933.224 Feet

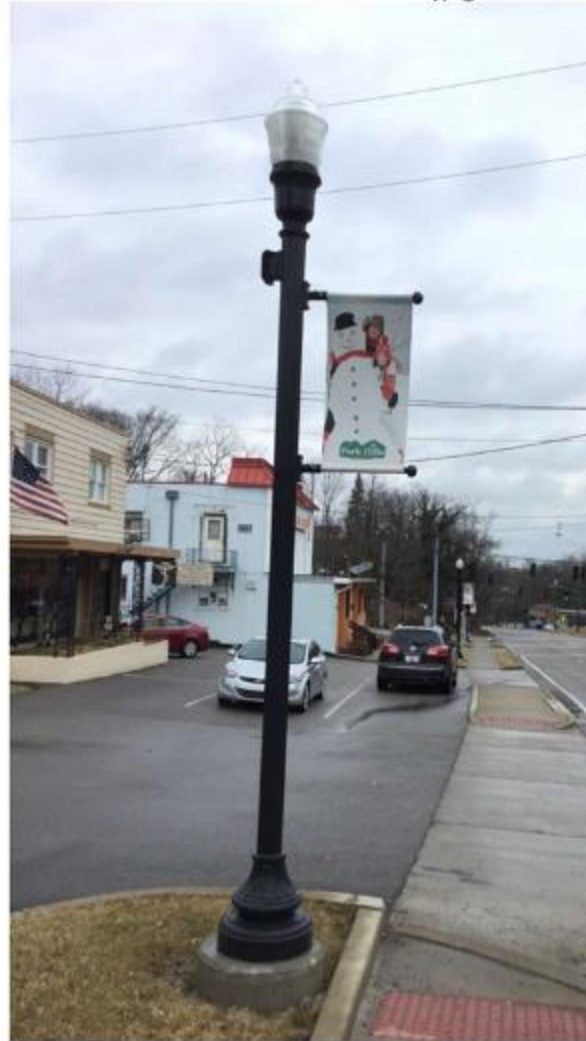
Attachments (1)

Field	Value
Angle (Degrees)	<null>
Attachment ID	<null>
Condition	Very Good
CreationDate	2/5/2018 6:59:23 PM
Creator	dedwards_PDS
Distance to Top of Pole	<null>
EditDate	2/22/2018 7:30:58 PM
Editor	dedwards_PDS
Facility Identifier	<null>
Facing Direction	<null>
GlobalID	{785185BD-3749-49B3-87E3-83E10A35D49}
Height (in)	<null>
Horizontal Clearance	<null>
Horizontal From	<null>
Install Date	<null>
Managed By	<null>
OBJECTID	145
Owned By	1
Reflective Coating	Yes
SHAPE	Point
Sheeting Type	<null>
Sign Type	Regulatory
Style	Stop Sign
Supplemental Materials	<null>
Text	
Vertical From	<null>
Width (in)	<null>



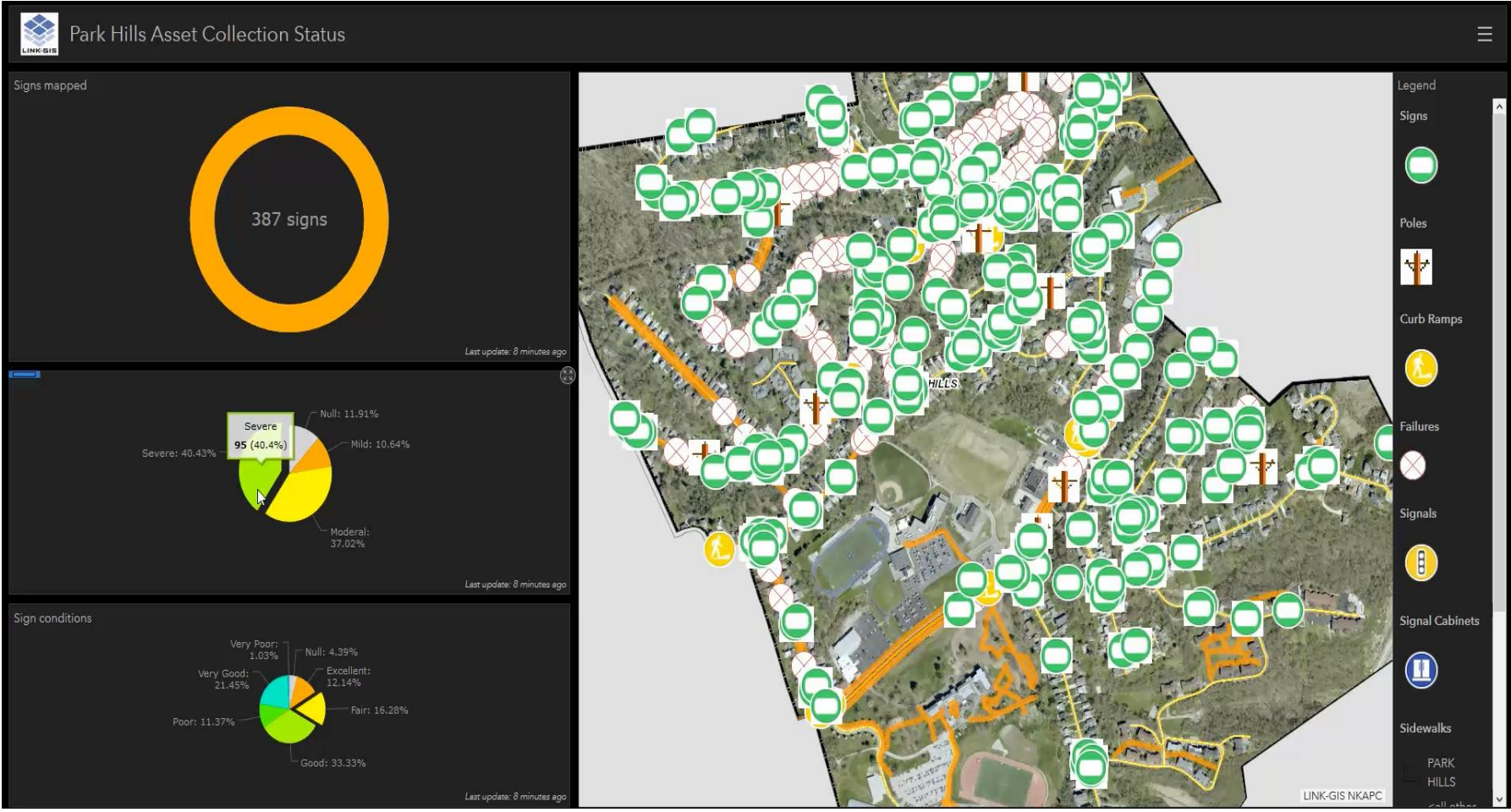


Other Stuff





How to Use the Data





Park Hills Asset Collection Status

1 of 4

Sign:

Facility Identifier

Attachment ID

Sign Type Regulatory

Height (in)

Width (in)

Style Stop Sign

Text

Facing Direction

Horizontal Clearance

Horizontal From

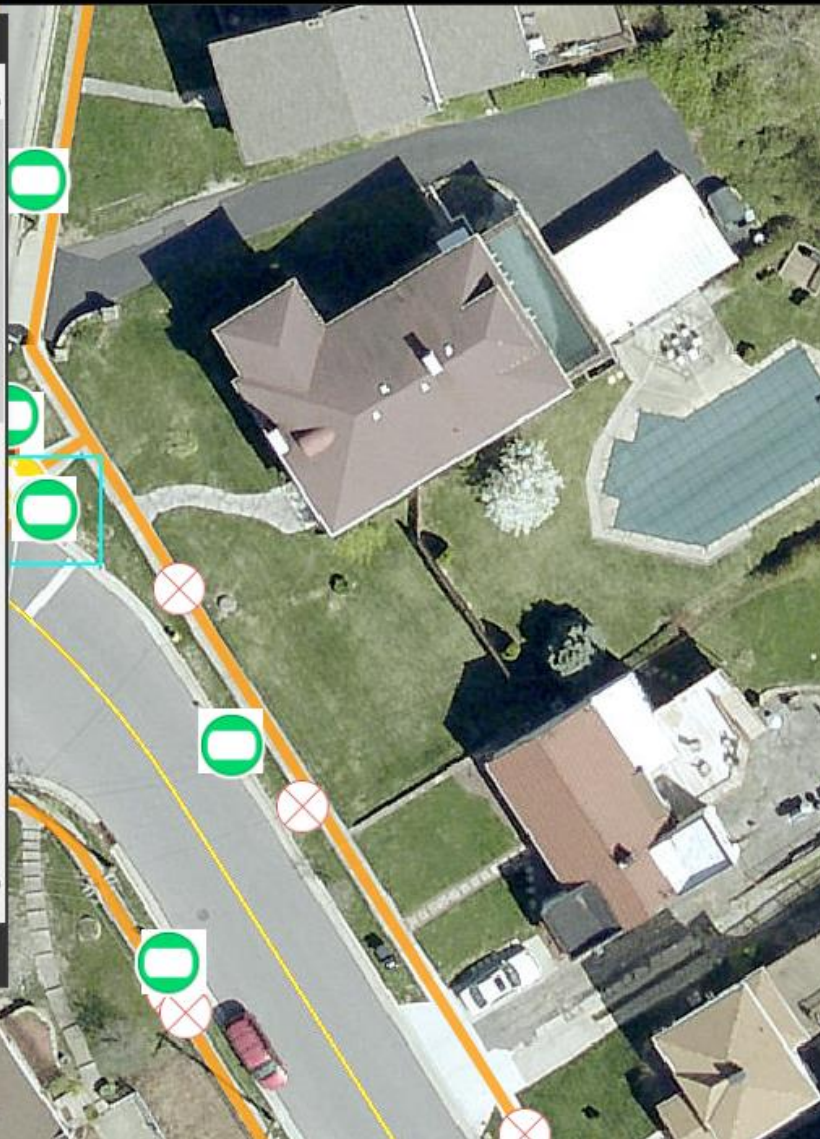
Vertical From

Angle (Degrees)

Distance to Top of Pole

Reflective Coating Yes

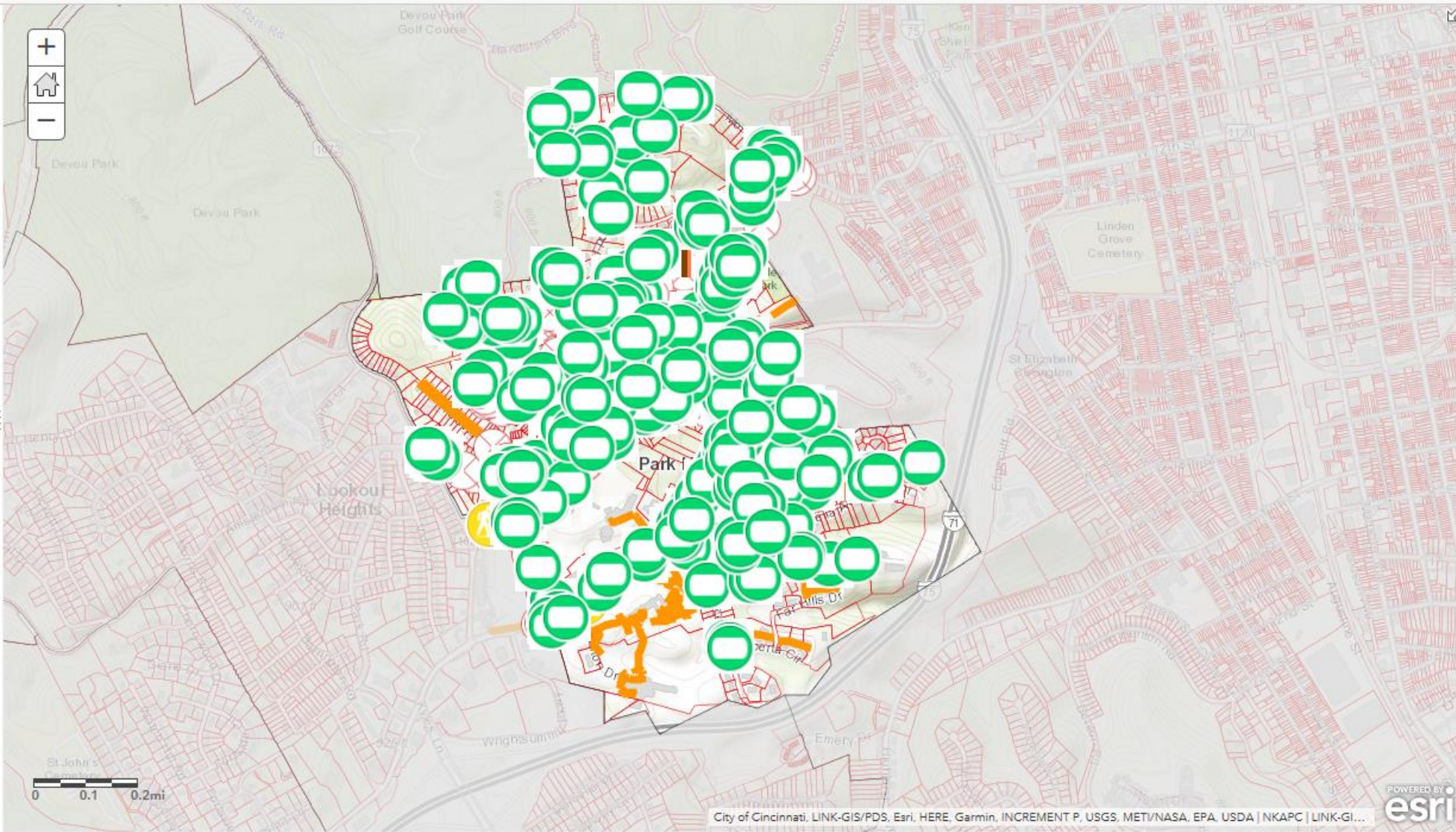
Sheeting Type



- Legend
- Signs
- Poles
- Curb Ramps
- Failures
- Signals
- Signal Cabinets

Contents

- ☒ ParkHillsAssetCollection - Sign
- ☒ ParkHillsAssetCollection - Poles
- ☒ ParkHillsAssetCollection - Curb Ramps
- ☒ ParkHillsAssetCollection - Failures
- ☒ ParkHillsAssetCollection - Signal
- ☒ ParkHillsAssetCollection - SignalCabinet
- ☒ ParkHillsAssetCollection - City Boundary
- ☒ ParkHillsAssetCollection - Sidewalks
- ☒ ParkHillsAssetCollection - Parcels
- ▶ [Topographic](#)



Details

Add ▾

Edit

Basemap

Analysis

Save ▾

Share

Print ▾

Directions

Measure

Bookmarks

Find address or place

About

Content

Legend

Contents

☒ ParkHillsAssetCollection - Sign

☐ ParkHillsAssetCollection - Poles

☐ ParkHillsAssetCollection - Curb Ramps

☐ ParkHillsAssetCollection - Failures

☐ ParkHillsAssetCollection - Signal

☐ ParkHillsAssetCollection - SignalCabinet

☐ ParkHillsAssetCollection - City Boundary

☐ ParkHillsAssetCollection - Sidewalks

☐ ParkHillsAssetCollection - Parcels

Topographic

+

Home

-

AMSTERDAM RD

1214

939

TERRACE DR

0

20

40ft

City of Cincinnati, LINK-GIS/PDS, Esri, HERE, Garmin, INCREMENT P, USGS, EPA, USDA

POWERED BY
esri

Questions?

J. Kyle Snyder, GISP

Principal GIS Specialist LINK-GIS / PDS

jksnyder@pdskc.org



PDS



LINK-GIS

A Northern Kentucky Geographic Information System

- ARC MAP Online
- <http://pdskc.maps.arcgis.com/home/webmap/viewer.html?useExisting=1&layers=827af9582eb145ce96e4ded13920fc5c>
- <https://pdskc.maps.arcgis.com/apps/opstdashboard/index.html#/69160263f6bc4ad692ac2edb3ffcc0ce>